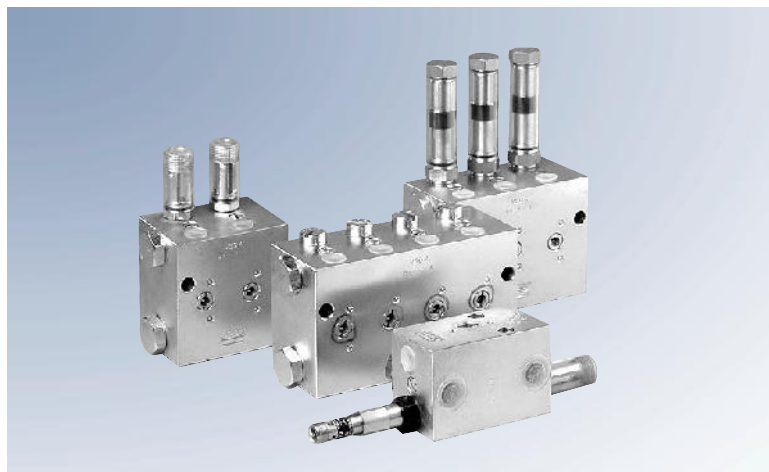


VSG, VSL, VSKH and VSKV Two-line Metering Devices



features include rust proof material, rust and acid proof material, electrical monitoring, adjusting device with magnetically operated function for rigorous environments, viton seals for high temperature applications, and NPT inlet/outlet threads. Refer to the identification code for model designations to order these devices with the additional features.

All models function on the same principle. The difference between VSL, VSG and VSKH lies in the output per outlet. Model VSKV has the same features as the VSKH with the exception that the outlet ports are located on the front face (vertical positioning). This provides an alternative for applications requiring a different tube orientation. Versions ... MD (with magnetically operated indication of function) are designed without dynamic seals and can work under extremely adverse ambient conditions: water, dust, high temperature up to 120° C (176° F).



VSG-KR

These high quality, galvanized steel metering devices are designed for high-pressure (up to 400 bar) two-line systems. They can also be used in low to medium-pressure systems. They are available with up to 8 outlets. Each outlet pair is equipped with an indicator pin for visual monitoring. Additional optional

VSG-KR Models

VSG-KR

Indicator Pin and Adjustable Output 0–2.2 cm³ (0–0.13 in³)

Connection Thread BSPP	Connection Thread BSPP	Number of Outlets	Connection Thread BSPP	Connection Thread NPTF	Connection Thread NPTF
Carbon Steel Galvanized	Stainless Steel (VA 1.4305/303)		Stainless Steel (VA 1.4571/316 Ti)	Carbon Steel Galvanized	Stainless Steel (VA 1.4305)
620-40022-1	620-40567-1	1		620-40022-2	
620-40015-1	620-40567-2	2	620-40839-2	620-40015-2	
620-40022-3	620-40567-3	3		620-40022-4	
620-40015-3	620-40567-4	4	620-40839-4	620-40015-4	
620-40022-5	620-40567-5	5		620-40022-6	
620-40015-5	620-40567-6	6	620-40839-6	620-40015-6	
620-40022-7	620-40567-7	7		620-40022-8	
620-40015-7	620-40567-8	8	620-40839-8	620-40015-8	

VSG, VSL, VSKH and VSKV Two-line Metering Devices



VSG-KD and D

Indicator Pin and Fixed Output* 2.2 cm³ (0.13 in³) Metering Screw (KD) VSG8-D
or with Metering Screw only (D) as Shown

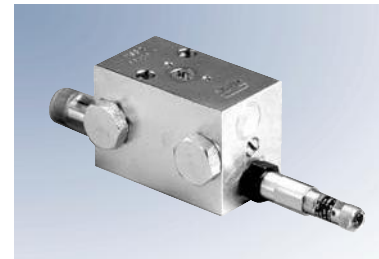
KD		D		
Connection Thread BSPB		Number of Outlets	Connection Thread NPTF	
Carbon Steel Galvanized			Carbon Steel Galvanized	
620-40023-1	620-40025-1	1	620-40023-2	620-40025-2
620-40023-3	620-40025-3	2	620-40023-4	620-40025-4
620-40023-5	620-40025-5	3	620-40023-6	620-40025-6
620-40023-7	620-40025-7	4	620-40023-8	620-40025-8
620-40024-1	620-40026-1	5	620-40024-2	620-40026-2
620-40024-3	620-40026-3	6	620-40024-4	620-40026-4
620-40024-5	620-40026-5	7	620-40024-6	620-40026-6
620-40024-7	620-40026-7	8	620-40024-8	620-40026-8

*also available: 0.55, 1.1, 1.65 cm³ (0.0336, 0.067, 0.1 in³)

VSG-KR-NP

Indicator Pin, Proximity Switch for Circular Plug M12 (237-13442-4)
and Adjustable Output 0–2.2 cm³ (0–0.13 in³)

Connection Thread BSPB	Number of Outlets	Connection Thread NPTF
Carbon Steel Galvanized		Carbon Steel Galvanized
620-40733-1	1	
620-40733-2	2	
620-40733-3	3	
620-40733-4	4	
620-40733-5	5	
620-40733-6	6	
620-40733-7	7	
620-40733-8	8	



VSG2KR-NP

Note: High pressure-rated proximity switch is available as a retrofit for
VSG models beyond series 9905. Part Number: 520-34018-1